



TATRA TAKES YOU FURTHER



**TATRA  
FIREFIGHTING**

**MADE FOR EXTREME  
CONDITIONS**





TATRA  
FORCE

TATRA  
PHOENIX

# TATRA TAKES YOU FURTHER

## ALL-TERRAIN VEHICLES

TATRA fire and rescue vehicles, built on an original chassis with a central backbone tube, have been irreplaceable helpers in the most difficult conditions on our planet for decades. In combination with various superstructures from renowned manufacturers, they represent a robust solution for all rescue services that intervene not only in accessible areas, but also in difficult and dangerous terrain. The mission of TATRA vehicles is to get the crew safely and quickly to their destination and to be a partner in all circumstances.

## TATRA IN ACTION

VIDEO IS WORTH A THOUSAND WORDS,  
SEE FOR YOURSELF.  
[YOUTUBE.COM/TATRATRUCKS](https://www.youtube.com/tatratrucks)



# BENEFITS

## TATRA WILL HELP YOU SOLVE MANY PROBLEMS

What does the motto „**TATRA TAKES YOU FURTHER**“ mean to us? It's our philosophy that we wake up with in the morning and put into every detail of our work. Where others see obstacles, TATRA sees a challenge. It's an idea that we want to imprint on all TATRA vehicles, to get you not just further, but anywhere, anytime, in whatever the conditions.

That's why customers depend on TATRA vehicles for the harshest conditions and know it will never let them down.



TATRA offers reliable transport in any weather (snow, icy, rain,...).



The TATRA suspension absorbs and dampens shocks when crossing terrain irregularities.



Thanks to the unique chassis concept, TATRA will overcome more demanding terrain, which is an impassable obstacle for other vehicles.



With an attachable front-axle drive without the need to stop, you enjoy all the benefits of a fully-powered vehicle whenever the surrounding conditions require it.



TATRA vehicles can move off-road significantly faster than competing vehicles.



The driver is less stressed by vibrations and noise, so he delivers more focused performance while driving.



Do you want to have a custom-made vehicle built according to your requirements?



The absence of unprotected conventional cardan shafts increases the reliability and long life of the drive chain.



The TATRA solution provides greater rigidity and torsion resistance than competing vehicles with ladder frames, which significantly increases reliability and long service life of superstructures.





# DISCOVER OUR EXCELLENCE

## UNIQUE TATRA SOLUTION

Creativity and genius make the best designers - that's TATRA. Clear and visionary ideas, together with a passionate heart, have been written in gold in the history of automotive design as the **TATRA VEHICLE CONCEPT**. What is the secret?

TATRA offers a unique chassis concept that was born in the 1920s and has not yet been surpassed. Take a look at our individual technical designs.



## Custom production



- Production of special one-piece designs.
- Individual customer approach.

## Central backbone tube



- Powertrain protection. The propeller shafts are housed in a central-backbone tube.
- The subframe can be discarded, saving up to 1.5 tons for 8x8 units.
- Extreme chassis resistance to bending and torsional stresses.
- Protecting the air bellows from damage.

## Independently swinging half-axes



- Higher terrain speed.
- Lower stress on the vehicle frame and superstructure, and the ability to negotiate even very difficult terrain.
- Reducing vibration by up to 30 % lower than on a rigid axle vehicle on a panel road.
- Low tilting torque, high driving stability.

## Mechanical all-wheel drive



- Chassis modularity 4 × 4 – 18 × 16.
- Unlike the hydraulic front-wheel drive, the TATRA concept allows the front axle to be driven at speeds over 30 km/h.
- Lower servicing requirements.

## All-axle steerable option



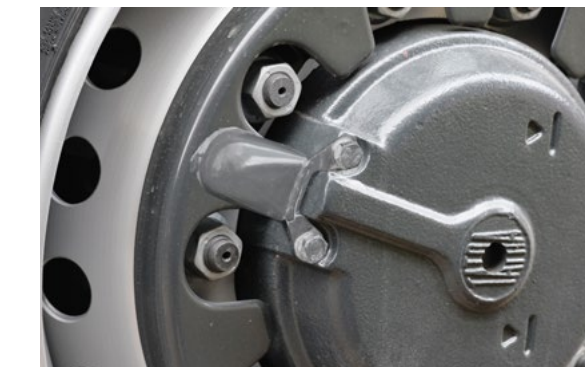
- Wheels can be turned in part or whole in the same or opposite-direction.
- Reduced turning radius.
- Improved manoeuvrability in narrow and confined spaces (dense buildings, etc.).

## Air suspension on all axles



- Vibration reduction.
- Steered drive axle load capacity up to 11.5 tons.
- High ride comfort when driving off-road.
- Zero wheel camber - increased tire life.
- Weight savings, enhanced steering angle, i.e. reduced turning radius, increased tire life.

## Central tire inflation system (CTIS)



- Tire pressure control from the driver's cab.
- Deflating, inflating wheels.
- Complete line to the wheels inside the axle.

## Above average fording



- Standard without preparation 1,000 mm.
- Extraordinary with preparation up to 1,200 mm.







**TATRA  
FORCE**

# 4x4

FIREFIGHTING SUPERSTRUCTURES  
CARRIER

The TATRA FORCE 4 × 4 chassis with a wheelbase of 4,182 mm represents the basic platform for firefighting applications. It combines a TATRA chassis with modern **Cummins** engines and **Allison** automatic transmissions.



## TATRA FORCE 7T5R21 / 7M6R21

CAS 30/4300/300



**ADJUSTABLE GROUND  
CLEARANCE**



**FORDING  
UP TO 1 500 mm**



**SPACIOUS CABIN  
3 + 1**



**WHEELS PRESSURE  
CONTROL FROM CAB**

- Cab: **TATRA, three seats + driver**
- Engine power: **291 kW at 2 100 rpm  
Cummins engine – EURO 6  
285 kW at 2 100 rpm  
TATRA engine – EURO 5**
- Transmission: **Allison 4500**
- Wheelbase: **4 182 mm**
- Axle load: **9 000 + 10 000 kg**
- Water/foam tank: **4 300 / 300 l**
- Flow: **3 000 l/min (pressure 1 MPa)  
250 l/min (pressure 4 MPa)**
- Tires: **14,00 R20 Continental**
- Weight: **18 000 / 19 000 kg**
- Turn Ø: **16,54 m**
- Turn Ø outline: **18,78 m**
- Dimensions: **7 720 × 2 550 × 2 900 mm**



TATRA SERVICE PLUS,  
SERVICE SCHOOL, PARTS  
26 - 27

LARGE VOLUME TANK  
24 - 25

CONTAINER  
CARRIER  
22 - 23

RESCUE VEHICLES,  
CRANES  
16 - 21

FIREFIGHTING &  
COMMAND VEHICLES  
06 - 15

UNIQUE  
TATRA SOLUTION  
04 - 05

INTRODUCTION  
BENEFITS  
02 - 03





**TATRA  
FORCE**

# TATRA FORCE 7T5R31 / 7M6R31

CAS 30/9000/540

 **ADJUSTABLE GROUND CLEARANCE**

 **FORDING UP TO  
1 500 mm**

 **SPACIOUS CABIN  
3 + 1**

 **WHEELS PRESSURE  
CONTROL FROM CAB**

- Cab: **TATRA, three seats + driver**
- Engine power: **291 kW at 2 100 rpm  
Cummins engine – EURO 6  
325 kW at 2 100 rpm  
TATRA engine – EURO 5**
- Transmission: **Allison 4500**
- Wheelbase: **4 090 + 1 450 mm**
- Axle load: **9 000 + 10 000 + 10 000 kg**
- Water/foam tank: **9 000 / 540 l**
- Flow: **2 000 l/min (pressure 1 MPa)  
250 l/min (pressure 4 MPa)**
- Tires: **14,00 R20**
- Weight: **25 000 / 26 000 kg**
- Turn Ø: **19 m**
- Turn Ø outline: **21,1 m**
- Dimensions: **9 150 × 2 550 × 2 900 mm**



# 6x6

**FIREFIGHTING SUPERSTRUCTURES  
CARRIER**

The **TATRA FORCE 6 × 6** chassis complements the basic platforms of firefighting applications. It combines a **TATRA** chassis with modern **Cummins** engines and **Allison** automatic transmissions.



- TATRA SERVICE PLUS, SERVICE SCHOOL, PARTS 26 - 27
- LARGE VOLUME TANK 24 - 25
- CONTAINER CARRIER 22 - 23
- RESCUE VEHICLES, CRANES 16 - 21
- FIREFIGHTING & COMMAND VEHICLES 06 - 15
- UNIQUE TATRA SOLUTION 04 - 05
- INTRODUCTION BENEFITS 02 - 03





**TATRA  
FORCE**

# 8x8

ARMoured FIREFIGHTING VEHICLE

**TATRA TITAN** is an extraordinary vehicle for dangerous conditions. The AWD TATRA chassis with all steerable axles is complemented by a unique cab with ballistic protection and filter ventilation. The design of TITAN predestines it for use in difficult conditions with a high degree of danger for the intervening crew or firefighting technology.



## TATRA IN ACTION

VIDEO IS WORTH A THOUSAND WORDS,  
SEE FOR YOURSELF.  
[YOUTUBE.COM/TATRATRUCKS](https://www.youtube.com/tatratrucks)



## TATRA TITAN 7MORC1.371 CZS 40/12000

**ADJUSTABLE GROUND CLEARANCE**

**FORDING UP TO 1500 mm**

**HERMETICALLY SEALED CABIN WITH BALLISTIC PROTECTION**

**PROTECTION AGAINST RADIANT HEAT AND FIRE**

- Cab: **KAPA, 4 seats, 4 doors, Level 2**
- Engine power: **373 kW at 1 900 rpm  
Cummins ISM 11 500 engine**
- Transmission: **Allison 4500**
- Wheelbase: **2 150 + 3 660 + 2150 mm**
- Axle load: **2 × 9 000 kg + 2 × 9 000 kg**
- Water/foam tank: **12 000 l**
- Flow: **4 000 l/min (pressure 1 MPa)  
250 l/min (pressure 4 MPa)**
- Tires: **16,00 R20 with CTIS**
- Weight: **36 000 kg**
- Turn Ø: **19,7 m**
- Turn Ø outline: **21,02 m**
- Dimensions: **11 000 × 2 550 × 3 300 mm**



TATRA SERVICE PLUS,  
SERVICE SCHOOL, PARTS  
26 - 27

LARGE VOLUME TANK  
24 - 25

CONTAINER  
CARRIER  
22 - 23

RESCUE VEHICLES,  
CRANES  
16 - 21

FIREFIGHTING &  
COMMAND VEHICLES  
06 - 15

UNIQUE  
TATRA SOLUTION  
04 - 05

INTRODUCTION  
BENEFITS  
02 - 03





**TATRA  
FORCE**

# 4x4

RUGGED COMMAND VEHICLE

**TATRA TRITON** is a highly durable command-reconnaissance vehicle designed for operations in difficult terrain conditions with a high degree of danger. The **TRITON** vehicle is built on the proven **TATRA FORCE 4 x 4** chassis with a central support tube and independently suspended half-axles and all-wheel drive. The vehicle can be used for fires with a risk of explosions in areas with hazardous or explosive material or in the event of natural disasters or large-scale fires.



## TATRA TRITON 7T3B21.37C CZS 15



**ADJUSTABLE GROUND CLEARANCE**



**FORDING UP TO 1 200 mm**



**HERMETICALLY SEALED CABIN 2 + 2**



**BALLISTIC PROTECTION**

- Cab: **KAPA, 4 seats, 4 doors, Level 2**
- Engine power: **300 kW at 1 900 rpm  
TATRA T3C-928-90 engine – Euro 3**
- Transmission: **Allison 4500, automatic, 6 gears, PTO**
- Wheelbase: **3 650 mm**
- Axle load: **8 000 + 9 000 kg**
- Water/foam tank: **2 000 l**
- Flow: **1 500 l/min (pressure 1 MPa)  
250 l/min (pressure 4 MPa)**
- Tires: **14,00 R20 XZL with run-flats and TELEFLOW technology**
- Weight: **17 000 kg (8 000 + 9 000 kg)**
- Turn Ø: **16,82 m**
- Turn Ø outline: **18,33 m**
- Dimensions: **6 271 × 2 550 × 2 760 mm**



TATRA SERVICE PLUS,  
SERVICE SCHOOL, PARTS  
26 - 27

LARGE VOLUME TANK  
24 - 25

CONTAINER  
CARRIER  
22 - 23

RESCUE VEHICLES,  
CRANES  
16 - 21

FIREFIGHTING &  
COMMAND VEHICLES  
06 - 15

UNIQUE  
TATRA SOLUTION  
04 - 05

INTRODUCTION  
BENEFITS  
02 - 03





TATRA  
TERRA



4x4

FIREFIGHTING SUPERSTRUCTURES  
CARRIER

By combining the unique features of TATRA chassis with fire-fighting superstructures of modern design, firefighters receive a unique, above-standard tool for their activities.

Thanks to the „TATRA CONCEPT“ and fording of 1200 mm, operability is guaranteed both in normal conditions and in crisis situations. Excellent drive through harsh terrain, high transport speed and comfort for both the crew and the supported superstructure is a standard.

TATRA  
2T5RA3.432

CAS 20/4500/270



FORDING UP TO  
1 200 mm



FULLY AUTOMATIC  
TRANSMISSION



INCREASED CREW  
SPACE 1 + 5



LIGHTING POLE  
WITH LED LIGHTS

- Cab: **TATRA, 5 seats + driver**
- Engine power: **325 kW at 2 100 rpm**  
**TATRA engine – EURO 5**
- Transmission: **Allison 4500**
- Wheelbase: **4 300 mm**
- Axle load: **8 500 + 11 500 kg**
- Water/foam tank: **4 500 / 270 l**
- Flow: **2 000 l/min** (pressure 1 MPa)  
**250 l/min** (pressure 4 MPa)
- Tires: **385/65 R22,5 +**  
**315/80 R22,5** double-mount
- Weight: **max. 18 000 kg**
- Turn Ø: **17,06 m**
- Turn Ø outline: **18,92 m**
- Dimensions: **7 950 × 2 550 × 3 000 mm**

TATRA  
2T5RB3.432

CAS 30/8500/510



FORDING UP TO  
1 200 mm



FULLY AUTOMATIC  
TRANSMISSION



INCREASED CREW  
SPACE 1 + 5



LIGHTING POLE  
WITH LED LIGHTS

- Cab: **TATRA, 5 seats + driver**
- Engine power: **325 kW at 2 100 rpm**  
**TATRA engine – EURO 5**
- Transmission: **Allison 4500**
- Wheelbase: **4 300 + 1 450 mm**
- Axle load: **8 500 + 11 500 + 11 500 kg**
- Water/foam tank: **8 500 / 510 l**
- Flow: **3 000 l/min** (pressure 1 MPa)  
**250 l/min** (pressure 4 MPa)
- Tires: **385/65 R22,5 +**  
**315/80 R22,5** double-mount
- Weight: **max. 26 000 kg**
- Dimensions: **9 270 × 2 550 × 3 000 mm**







**TATRA  
FORCE**

# 6x6

RESCUE VEHICLE

By combining the unique features of **TATRA** chassis with fire-fighting superstructures of modern design, firefighters receive an above-standard rescue truck. The vehicle is designed for rescue work both on paved roads and in demanding terrain conditions. The basis of the car is a three-axle **TATRA FORCE** chassis. The equipment is complemented by blades for removing obstacles, snow and for modifying various surfaces. The vehicle is equipped with two hydraulic rope winches with a rear outlet and a rotating pulley.



## TATRA 7T5R31.41ZE



**ADJUSTABLE GROUND CLEARANCE**



**FORDING UP TO 1 500 mm**



**CAB 1 + 3**



**WHEELS PRESSURE CONTROL FROM CAB**

- Cab: **TATRA, three seats + driver**
- Engine power: **325 kW at 2 100 rpm  
TATRA T3D-928-31 engine– EURO 5**
- Transmission: **Allison 4500**
- Wheelbase: **4 090 + 1 450 mm**
- Axle load: **9 000 + 9 000 + 9 000 kg**
- Winch: **SEPMATIC H100 (40m rope, Ø 14 mm)  
SEPMATIC H240 (60m rope, Ø 24 mm)**
- Crane: **Hiab 222 ATF-2  
Load capacity 20,5 t/m**
- Tires: **14,00 R20**
- Turn Ø: **19,00 m**
- Turn Ø outline: **21,10 m**
- Dimensions: **9 150 × 2 550 × 2 900 mm**



TATRA SERVICE PLUS,  
SERVICE SCHOOL, PARTS  
26 - 27

LARGE VOLUME TANK  
24 - 25

CONTAINER  
CARRIER  
22 - 23

RESCUE VEHICLES,  
CRANES  
16 - 21

FIREFIGHTING &  
COMMAND VEHICLES  
06 - 15

UNIQUE  
TATRA SOLUTION  
04 - 05

INTRODUCTION  
BENEFITS  
02 - 03





**TATRA  
FORCE**

**TATRA  
OMARS** 7T5R44.33ZA  
CAS 30/4300/300



**ADJUSTABLE GROUND  
CLEREANCE**



**FORDING  
UP TO 1 500 mm**



**CAB 1 + 2**



**WHEELS PRESSURE  
CONTROL FROM CAB**

- Cab: **TATRA, three seats + driver**
- Engine power: **325 kW při 2 100 ot./min  
TATRA engine – EURO 5**
- Transmission: **TATRA NORGREN**
- Wheelbase: **2 150 + 3 270 + 1 450 mm**
- Axle load: **2 × 9 000 + 2 × 13 000 kg**
- Rescue: **OMARS 110T 11 – load capacity 7 200 kg**
- Crane: **HIAB X-HiPro 418 EP-5  
load capacity 37,8 t/m**
- Winch: **VIME EPH - 10 t (40m rope, Ø 18 mm)  
BREVINI BWT - 20 t (40m rope, Ø 20 mm)  
VIME 4500 EPH - 5 t (25m rope, Ø 11 mm)**
- Tires: **14,00 R20 + 325/95 R24**
- Turn Ø: **28 m**
- Dimensions: **10 530 × 2 550 × 3 995 mm**

**8x8**

RESCUE VEHICLE

By combining the unique features of TATRA chassis with modern firefighting and rescue superstructures firefighters get a unique, above-standard rescue truck. It is primarily designed for rescuing sunken or crashed equipment, both on paved roads and in difficult terrain conditions.







**TATRA  
FORCE**

# 8x8

RESCUE TRUCK CRANE

By combining the unique features of **TATRA** chassis with fire-fighting superstructures of modern design, firefighters receive a unique, above-standard rescue truck. The vehicle is primarily intended for rescue and crane work, both on paved roads and in demanding terrain conditions. The basis of the car is a four-axle **TATRA FORCE** chassis with an **all-axle steering system**.



**TATRA IN ACTION**

VIDEO IS WORTH A THOUSAND WORDS,  
SEE FOR YOURSELF.  
[YOUTUBE.COM/TATRATRUCKS](https://www.youtube.com/tatratrucks)



## TATRA 7T5RC1.33ZC

ČKD AV30.1 AWS



**ADJUSTABLE  
GROUND CLEREANCE**



**FORDING  
UP TO 1 500 mm**



**ALL AXLES STEERING**



**WHEELS PRESSURE  
CONTROL FROM CAB**

- Cab: **TATRA, three seats + driver**
- Engine power: **325 kW at 2 100 rpm  
TATRA engine – EURO 5  
manual TATRA**
- Transmission: **2 150 + 3 320 + 1 500 mm**
- Wheelbase: **2 150 + 3 320 + 1 500 mm**
- Axle load: **2 × 9 000 + 2 × 10 000 kg**
- Tires: **16,00 R20** (all wheels steered, with reductions and CTIS system)
- Turn Ø: **17,86 m**
- Turn Ø outline: **20,00 m**
- Dimensions: **11 030 × 2 550 × 3 500 mm**



TATRA SERVICE PLUS,  
SERVICE SCHOOL, PARTS  
26 - 27

LARGE VOLUME TANK  
24 - 25

CONTAINER  
CARRIER  
22 - 23

RESCUE VEHICLES,  
CRANES  
16 - 21

FIREFIGHTING &  
COMMAND VEHICLES  
06 - 15

UNIQUE  
TATRA SOLUTION  
04 - 05

INTRODUCTION  
BENEFITS  
02 - 03





**TATRA  
PHOENIX**

**8x8**

CONTAINER CARRIER

Container carrier on the **TATRA PHOENIX** chassis is a vehicle designed for the transport of containers during various rescue operations. The concept of the vehicle allows operation both on paved roads and in difficult terrain. The vehicle is equipped with a **Multilift Ultima Commander 21** with a load capacity of **up to 21 tons**, which is adapted for the transport of **ABROLL** and **ISO** containers.



**TATRA  
8P3R43.29ZA**  
CONTAINER CARRIER

 **FORDING**  
UP TO 800 mm

 **PREDICTIVE CRUISE CONTROL**

 **CAB 1 + 1**

 **CAMERA SYSTEM FOR HOOK POSITION CONTROL**

- Cab: **DAF, 1 + 1**
- Engine power: **390 kW at 2 100 rpm  
Paccar MX-13 engine – EURO 3**
- Transmission: **manual ZF - 16 gears**
- Wheelbase: **2 150 + 2 950 + 1 320 mm**
- Axle load: **2 x 8 000 + 2 x 11 500 kg**
- Tires: **315/80 R22,5 + 315/80 R22,5 double mount**
- Dimensions: **11 030 x 2 550 x 3 500 mm**



TATRA SERVICE PLUS,  
SERVICE SCHOOL, PARTS  
26 - 27

LARGE VOLUME TANK  
HASIČI  
24 - 25

CONTAINER CARRIER  
22 - 23

RESCUE VEHICLES,  
CRANES  
16 - 21

FIREFIGHTING &  
COMMAND VEHICLES  
06 - 15

UNIQUE  
TATRA SOLUTION  
04 - 05

INTRODUCTION  
BENEFITS  
02 - 03





**TATRA  
FORCE**



# 10x10

LARGE VOLUME TANK

By combining the unique features of **TATRA chassis** with fire-fighting superstructures of modern design, firefighters receive a unique **large-volume tank with a capacity of 21,000 liters**. The vehicle is primarily intended for the transport of large volumes of water and extinguishing agents. The vehicle can also serve as a retention tank for long-distance transport of water to the scene. For better maneuverability of the vehicle, the chassis is equipped with a **steering system for the first two and last two axles**.

## TATRA TAURUS 7M3R51.27ZA CV40 /21 000

 **21 000 l OF  
TANK CAPACITY**

 **WHEELS PRESSURE  
CONTROL FROM CAB**

 **CAB 1 + 1**

 **FIRST TWO AND LAST  
TWO STEERED AXLES**

- Cab: **TATRA, 1 + 1**
- Engine power: **447 kW at 1 200 rpm  
Cummins ISX15 engine – EURO 3**
- Transmission: **Allison 4700PR**
- Wheelbase: **2 150 + 2 910 + 1 500 + 1 500 mm**
- Axle load: **2 × 9 000 kg + 3 × 10 000 kg**
- Water tank: **21 000 l**
- Flow: **4 000 l/min (pressure 1 MPa)  
250 l/min (pressure 4 MPa)**
- Tires: **14,00 R20  
with beadlocks and CTIS system**
- Turn Ø: **21,28 m**
- Turn Ø outline: **23,46 m**
- Dimensions: **12 500 × 2 550 × 3 300 mm**



TATRA SERVICE PLUS,  
SERVICE SCHOOL, PARTS  
26 - 27

LARGE VOLUME TANK  
24 - 25



CONTAINER  
CARRIER  
22 - 23

RESCUE VEHICLES,  
CRANES  
16 - 21

FIREFIGHTING &  
COMMAND VEHICLES  
06 - 15

UNIQUE  
TATRA SOLUTION  
04 - 05

INTRODUCTION  
BENEFITS  
02 - 03



# TATRA SERVICE PLUS™

## NO-RISK BUSINESS

TATRA SERVICE PLUS™ is a service package where customers determine the scope of services and servicing support. It gives them consolidated and planned service expenses and a reduced risk of vehicle inoperability.

It also increases the resale value.

1. When buying a new vehicle, we offer the option of an extended warranty for **up to three years of full warranty**.
2. Training in the correct handling and driving of the vehicle off road on a proving ground with professional trainers.
3. Customer service **tailored to customer requirements** and selection of preferred services.
4. We provide a **free replacement vehicle\*** or financial compensation for the duration of the repair.

\* Offer valid only for service contracts.

TATRA SERVICE PLUS



# TATRA TRUCKS TRAINING CENTRE

## SERVICE SCHOOL

The TATRA TRUCKS Training Centre provides specialized service training to suit your needs. We provide professionalism and have many years of experience in top-level training.

- training for users and service specialists
- the classrooms of the Training Centre are equipped with special teaching modules
- expert staff – instructors with many years of experience
- training on site at the customer possible
- individual approach (training according to specific customer requirements)
- providing unique care at the manufacturer level



# ORIGINAL SPARE PARTS

## WILL TAKE YOU FURTHER

We are all originals, so there is no reason to resort to substitutes. If you want to maintain the original driving, operating and economic characteristics of your TATRA vehicles, use only genuine TATRA spare parts for the service life of your truck.

### Why use only genuine TATRA parts:

- high quality
- TATRA certificate
- TATRA TRUCKS a.s. OEM
- maximum reliability
- 100% functionality
- safety guarantee
- maximum service life
- tested according to the strictest standards





TATRA TAKES YOU FURTHER

**TATRA  
FIREFIGHTING**

TATRA TRUCKS a. s.

Areál Tatry 1450/1  
742 21 Kopřivnice  
Czech Republic

+420 556 491 111

    
@TATRATRUCKS

[WWW.TATRATRUCKS.COM](http://WWW.TATRATRUCKS.COM)